

NPD, INC. DOES NOT WARRANT THE ACCURACY OF ANY DIMENSIONS SET FORTH HEREIN. CONTRACTOR IS RESPONSIBLE FOR VERIFYING ALL SITE CONDITIONS TO INCLUDE FIELD DIMENSIONS HEREON. ANY DISCREPANCIES WITH THESE CONSTRUCTION DRAWINGS SHOULD BE NOTED IMMEDIATELY. CONTRACTOR IS RESPONSIBLE FOR VERIFYING ALL DIMENSIONS ON THE JOB. NPD, INC. DOES NOT PROVIDE ARCHITECTURAL, STRUCTURAL, MECHANICAL, ELECTRICAL, OR PLUMBING SERVICES. IF SUCH SERVICES ARE REQUIRED BY THE DRAWINGS, A LICENSED PROFESSIONAL MUST BE OBTAINED. NPD, INC. PREPARED THIS DRAWING PACKAGE AS A PRACTICAL SOLUTION TO INTERIOR DESIGN PROBLEMS. IT IS NOT INTENDED AS AN ARCHITECTURAL, STRUCTURAL, OR MECHANICAL PLAN OR SPECIFICATION. ANY CEILING, ELEVATOR, KITCHEN, BATHROOM, OR LINE TO SHOW ONLY LOCATION OF OUTLETS, SWITCHES, VENTS, ETC. AND THE TYPE OF FIXTURES AND EQUIPMENT. THIS DRAWING PACKAGE IS THE PROPERTY OF NPD, INC. UNAUTHORIZED USE OF THESE DOCUMENTS IS PROHIBITED.

APPROVAL:

THESE DRAWINGS ARE PROTECTED UNDER THE COPYRIGHT ACT OF 1976 AND SHALL NOT BE REPRODUCED WITHOUT THE WRITTEN PERMISSION OF NPD, INC.

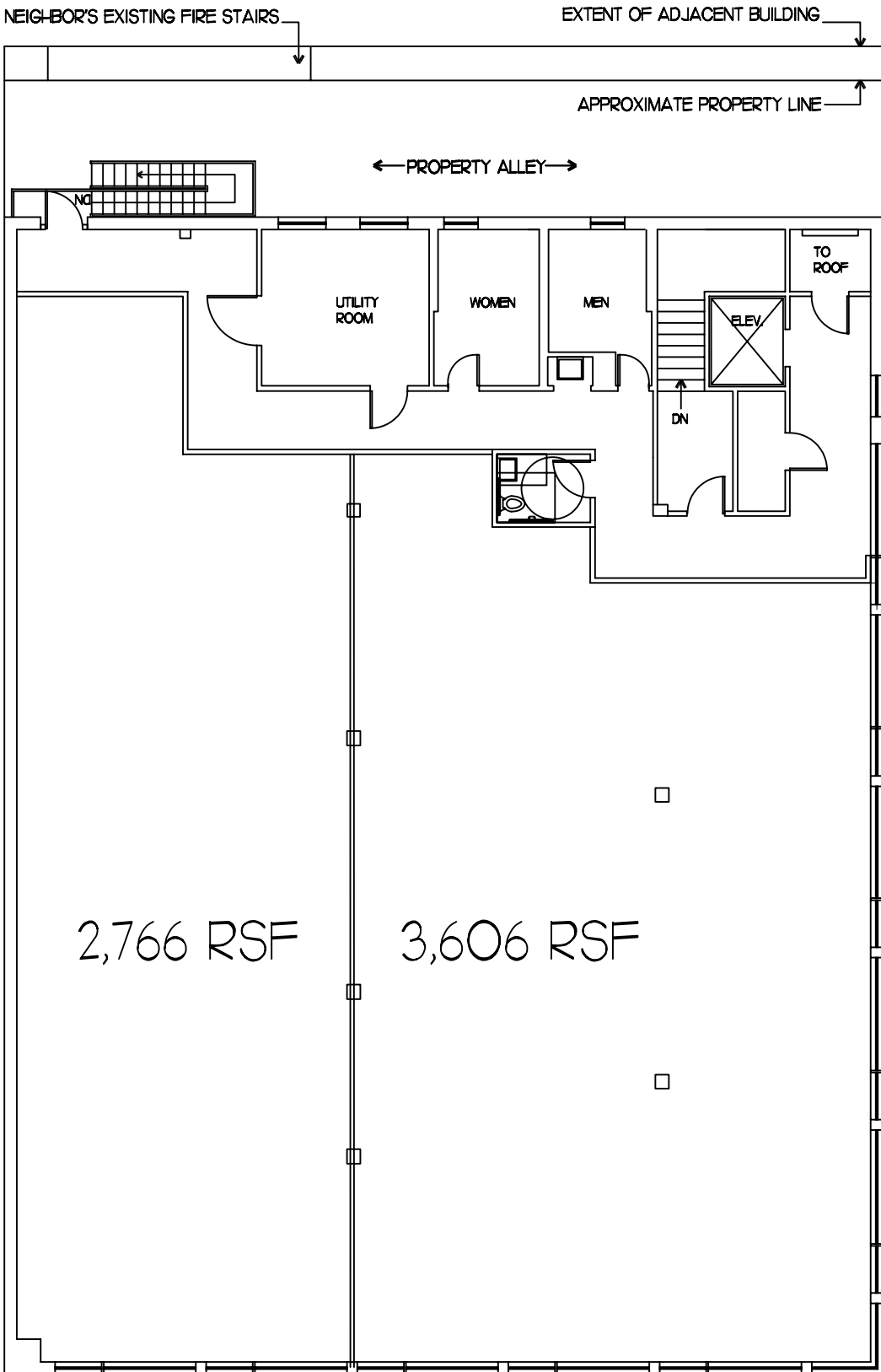
PROPOSED DEMISING PLAN
 SECOND FLOOR
 8600 FENTON STREET
 SILVER SPRING, MD 20910

NPD Inc
 INTERIOR DESIGN & PLANNING
 16 GREENMEADOW DRIVE
 TIMONIUM, MARYLAND 21093
 TEL: 410.561.9561 FAX: 410.561.4809
 E-MAIL: nfd@nfd.com

REVISIONS:
 27 JULY 07
 23 AUG. 07

DATE: 18 JULY 07
 SCALE: N.T.S.
 DRAWN BY: C.K.H.
 DESIGN BY: C.K.H.
 CHECKED BY: C.K.H.
 PROJECT #: CR457

ID. 1 / 1
 OF



SECOND FLOOR
 6,372 SQ FT

NEIGHBOR'S EXISTING FIRE STAIRS

EXTENT OF ADJACENT BUILDING

APPROXIMATE PROPERTY LINE

← PROPERTY ALLEY →

19'-4"

91'-2"

78'-2"

68'-9"

UTILITY ROOM

WOMEN

MEN

TO ROOF

ELEV

DN

← FENTON STREET →

SECOND FLOOR
6,372 SQ FT

NFD, INC. DOES NOT WARRANT THE ACCURACY OF ANY DIMENSIONS SET FORTH HEREIN. CONTRACTOR IS RESPONSIBLE FOR VERIFYING ALL SITE CONDITIONS TO INCLUDE EXISTING CONDITIONS. NEIGHBORHOOD SHOULD THERE BE ANY DISCREPANCIES WITH THESE CONSTRUCTION DRAWINGS. PACKAGE NFD, INC. SHOULD BE NOTIFIED IMMEDIATELY FROM RESPONSE. IF THE CONTRACTOR IS NOT TO MAKE ANY CHANGES ON HIS OWN WITHOUT NOTIFYING NFD, INC. HE IS RESPONSIBLE FOR BASE. NFD, INC. DOES NOT PROVIDE ARCHITECTURAL, STRUCTURAL, ENGINEERING OR MECHANICAL SERVICES. IF SUCH SERVICES ARE REQUIRED BY THE DRAWING PACKAGE A LICENSED PROFESSIONAL MUST BE OBTAINED. NFD, INC. REPAIRS THE DRAWING PACKAGE AS A PRACTICAL SOLUTION TO INTERPRET DESIGN PROBLEMS. IT IS NOT INTENDED AS AN ARCHITECTURAL, ENGINEERING OR CONTRACTOR'S PLAN OR SPECIFICATION. ANY CEILING, ELECTRICAL, MECHANICAL, BATHROOM OR LINE PLAN OR SPECIFICATION IS PREPARED TO SHOW ONLY LOCATION OF OUTLETS, SWITCHES, VENTS, ETC. AND THE TYPE OF FIXTURES AND EQUIPMENT. THIS DRAWING PACKAGE IS THE PROPERTY OF NFD, INC. UNAUTHORIZED USE OF THESE DOCUMENTS IS PROHIBITED.

APPROVAL:

THESE DRAWINGS ARE PROTECTED UNDER THE COPYRIGHT ACT OF 1976 AND SHALL NOT BE REPRODUCED WITHOUT THE WRITTEN PERMISSION OF NFD, INC.

AVAILABLE SPACE
SECOND FLOOR
8600 FENTON STREET
SILVER SPRING, MD 20910
AS-BUILT PLAN

NFD Inc
INTERIOR DESIGN & PLANNING
16 GREENMEADOW DRIVE
TIMONIUM, MARYLAND 21093
TEL: 410.561.9561 FAX: 410.561.4809
E-MAIL: nfd@nfd.com

REVISIONS:

DATE: 10 JULY 07
SCALE: N.T.S.
DRAWN BY: C.K.H.
DESIGN BY:
CHECKED BY: C.K.H.
PROJECT #: CR457

ID. 1 / 1
OF